

street view



# Ring Road Housing

## Technical description

The strip of land along the Ring Road all around the Main Island is zoned as mixed housing and commercial use.

Retail outlets, entrances to the garages and flats are proposed from the inner street while the green buffer is proposed along the Ring Road.

There are various proposed design solutions for these projects. Blocks and individual houses.

The proposed design shows a block containing stairways to the apartments entrances, shops and collective garages in the ground floor.

On the first and second floor duplex dwelling units with three and four bedrooms are located.

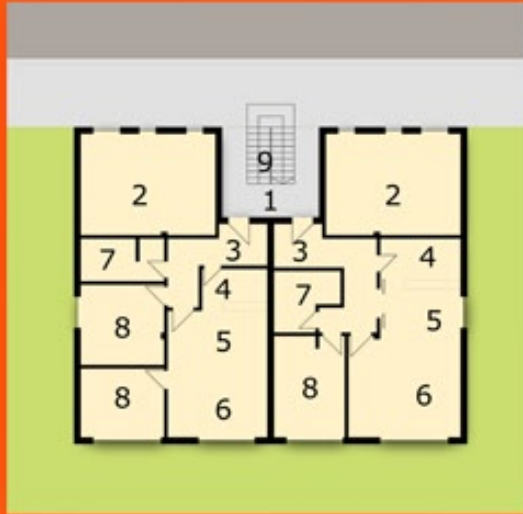
All external and internal finishes will be of the high standards. Similarly all building services will be of the highest standard.

A “green” building design will be fully implemented in the further development of the design.

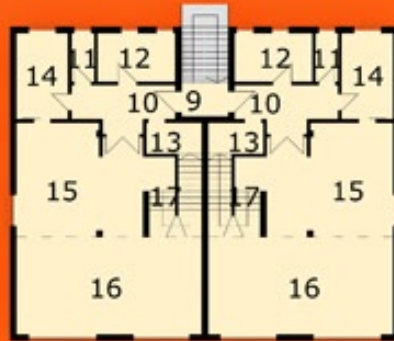
The principles of cost and energy efficiency in the contemporary building and services design will be adhered to in order to minimize maintenance and running costs.

The buildings will be founded on piles. Main structural framework will be concrete while secondary elements will be done in masonry or light weight partitions.

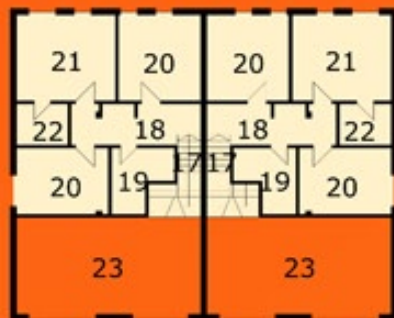
Alternative Design 1



- Ground floor
1. passage
  2. retail
  3. entrance
  4. kitchen
  5. dining room
  6. living room
  7. bathroom
  8. bedroom
  9. external stair



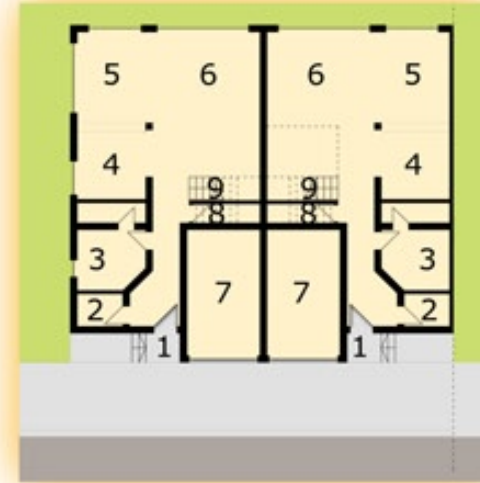
- First floor
9. external stair
  10. corridor
  11. toilet
  12. study
  13. walk in cupboard
  14. kitchen
  15. dining room
  16. living room
  17. internal stair



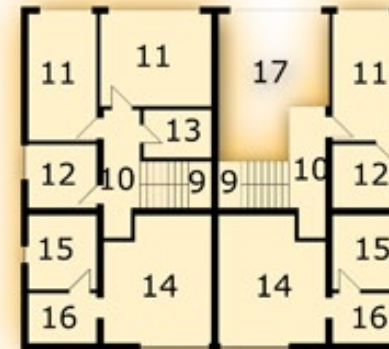
- Second floor
17. internal stair
  18. corridor
  19. bathroom
  20. bedroom
  21. master bedroom
  22. master bathroom
  23. void



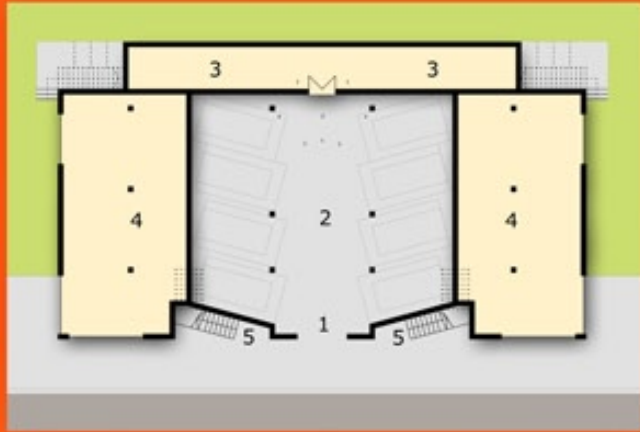
Alternative Design 2



- Ground floor
1. entrance
  2. walk in cupboard
  3. store
  4. kitchen
  5. dining room
  6. living room
  7. retail
  8. store
  9. stair

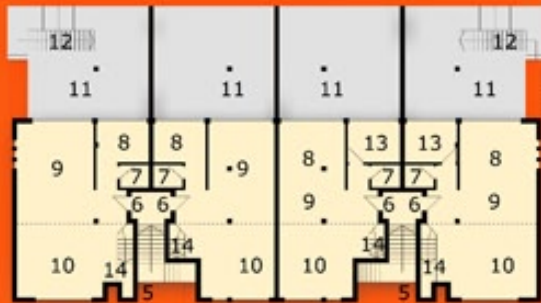


- First floor
9. stair
  10. corridor
  11. bedroom
  12. bathroom
  13. walk in cupboard
  14. master bedroom
  15. master bathroom
  16. master dressing room
  17. void



- Ground floor
- 1. entrance
  - 2. garage
  - 3. store
  - 4. retail
  - 5. stair

side view



- First floor
- 5. stair
  - 6. entrance
  - 7. toilet
  - 8. kitchen
  - 9. dining room
  - 10. living room
  - 11. terrace
  - 12. external stair
  - 13. study
  - 14. internal stair



- Second floor
- 14. internal stair
  - 15. void
  - 16. bathroom
  - 17. bedroom
  - 18. master bedroom
  - 19. master bathroom
  - 20. corridor



entrance view